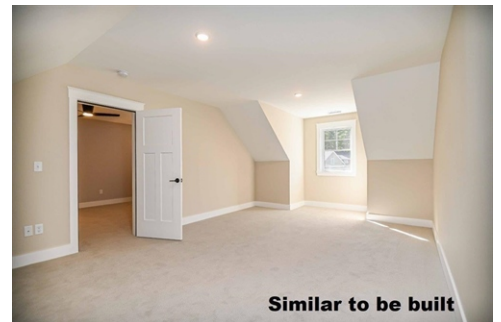
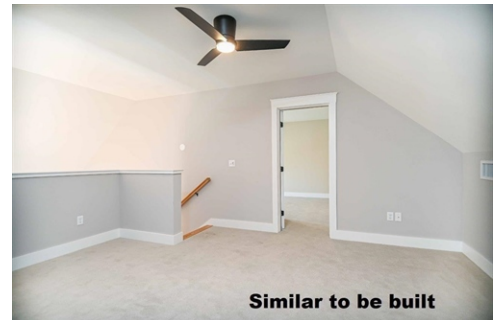


NEW CONSTRUCTION CONDO WITH SCREENROOM AVAILABLE MID-OCTOBER



\$ 519,000



9 Sophie's Way Unit 23, Wells, ME 04090

- » Beds: 2 | Baths: 2 Full, 1 Half
- » MLS #: 1551817
- » Condominium | 1,495 ft²
- » More Info: 9SophiesWay.IsForSale.com



Lori Barrett, REALTOR
 Licensed in Maine and NH
 (207) 337-1515 (Direct)
 (207) 363-4300 (Office)
 (207) 363-1458 (Fax)
LoriBarrettBroker@gmail.com
<http://www.LoriBarrettBroker.com>



**COLDWELL
BANKER**

YORKE REALTY

Coldwell Banker Yorke Realty
 529 U.S. Route 1, Suite 101
 York, ME 03909

NEW CONSTRUCTION CONDO WITH SCREENROOM AVAILABLE NOW ~ Fairway View Village in Wells, Maine, has one of its newest year-round units is nearly complete and will be ready for occupancy in mid-October. This newly constructed 2-bedroom duplex-style unit has a thoughtful floor plan which allows for aging in place. Step into a wonderful screened porch off the kitchen and enjoy warm summer breezes while staying protected from the sun or potential elements. Every detail has been carefully considered in the design-build process. Open concept main living space offers first floor living, including a fully applianced kitchen with island, stackable washer/dryer and a first-floor primary bedroom suite with a walk-in closet. The primary bathroom boasts a step-in shower, double sinks and shelves for linens. The 2nd level has a guest bedroom, a full bathroom and a generous sized loft. One-car attached garage provides space for a possible work bench area and it has the potential for 240 square feet of additional living space.

ME Lic. #BR914300 / NH Lic. #065507.

©Properties Online, Inc. The above information including square footage is deemed reliable but has not been independently verified and cannot be guaranteed. Coldwell Banker® and the Coldwell Banker Logo are registered trademarks licensed to Coldwell Banker Real Estate INC and used by Properties Online, Inc. with permission. An Equal Opportunity Company. Equal Housing Opportunity.

